

**Let's
LOOP
America**



**Hearing loss is
known as the
Invisible Disability
so you may not
know that...**



One out of every 5 people in the US is hard of hearing



Based on research by the National Institute on Deafness and Other Communication Disorders, it's estimated that 20 % of the people who frequent your facility have
a measureable hearing loss.



Also, did You Know...

- 48 million people in this country have a hearing loss
- 30% of those over 65 are HbH
- 50% of those over 75 are HbH
- 20% of teens are HbH
- 65% of the HbH are under the age of 65

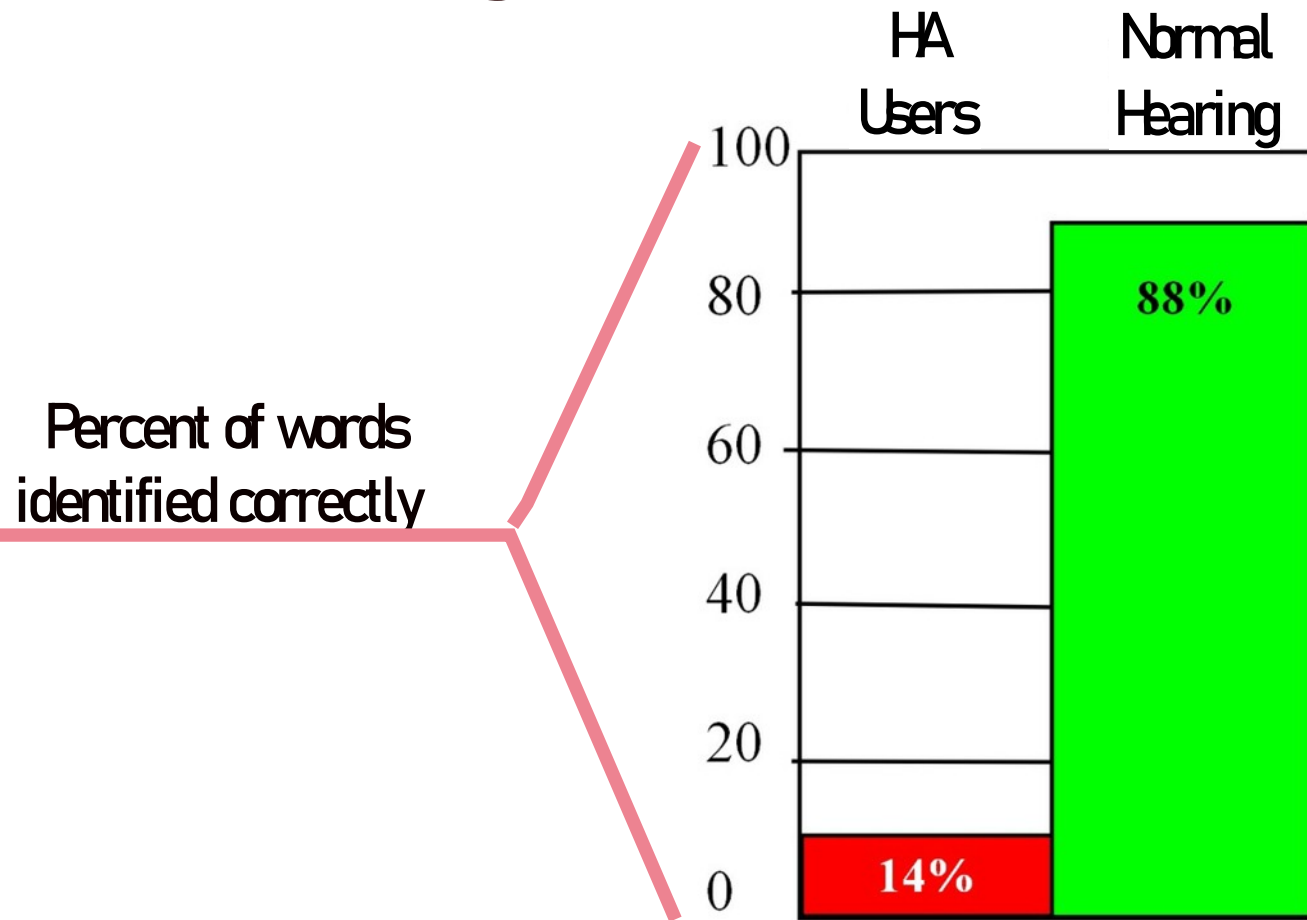


Their needs vary...

- Some who are hard of hearing hear fairly well unaided.
- Some hear fairly well using hearing aids.
- Some hear fairly well in one-on-one settings but need additional help hearing what is being said to them whether they have hearing aids or not in some especially problematic settings.



Hearing Aid Performance



Average scores for hearing aid users and normal hearing listeners under identical conditions



Obstacles to Understanding Speech

Sound level of speech

Speech to noise ratio

Ambient noise

Reverberation

Unfriendly PA system

Covid 19 mask



For Many With Hearing Loss Hearing Aids Aren't Enough

The effective range of hearing aid microphones is only 6 to 8 feet



The Solution For These People Is An ASSISTIVE LISTENING SYSTEM or ALS

**In recognition of this need, the Americans with
Disabilities Act requires ALSs in some
places of assembly**



The ADA

Americans with Disabilities Act

In each assembly area where audible communication is integral to the use of the space and a public address system is available an assistive listening system shall be provided.

EXCEPTION: other than in courtrooms, assistive listening systems shall not be required where audio amplification is not provided.

The provision also in not applicable to places of worship.



Different types of ALS

- RF (radio frequency or FM) systems that require all users to borrow a receiver and earphones or a neckloop.
- InfraRed systems that require all users to borrow a receiver and earphones or a neckloop.
- WiFi Audio systems that require users to use their personal Bluetooth capable smartphone and Bluetooth earbuds or Bluetooth capable hearing aids or a borrowed Wifi receiver with earphones or a neckloop.
- **Hearing Loop systems that allow those with telecoil equipped hearing aids to connect with the simple touch a button.** Others must borrow a receiver and earphones or a neckloop.

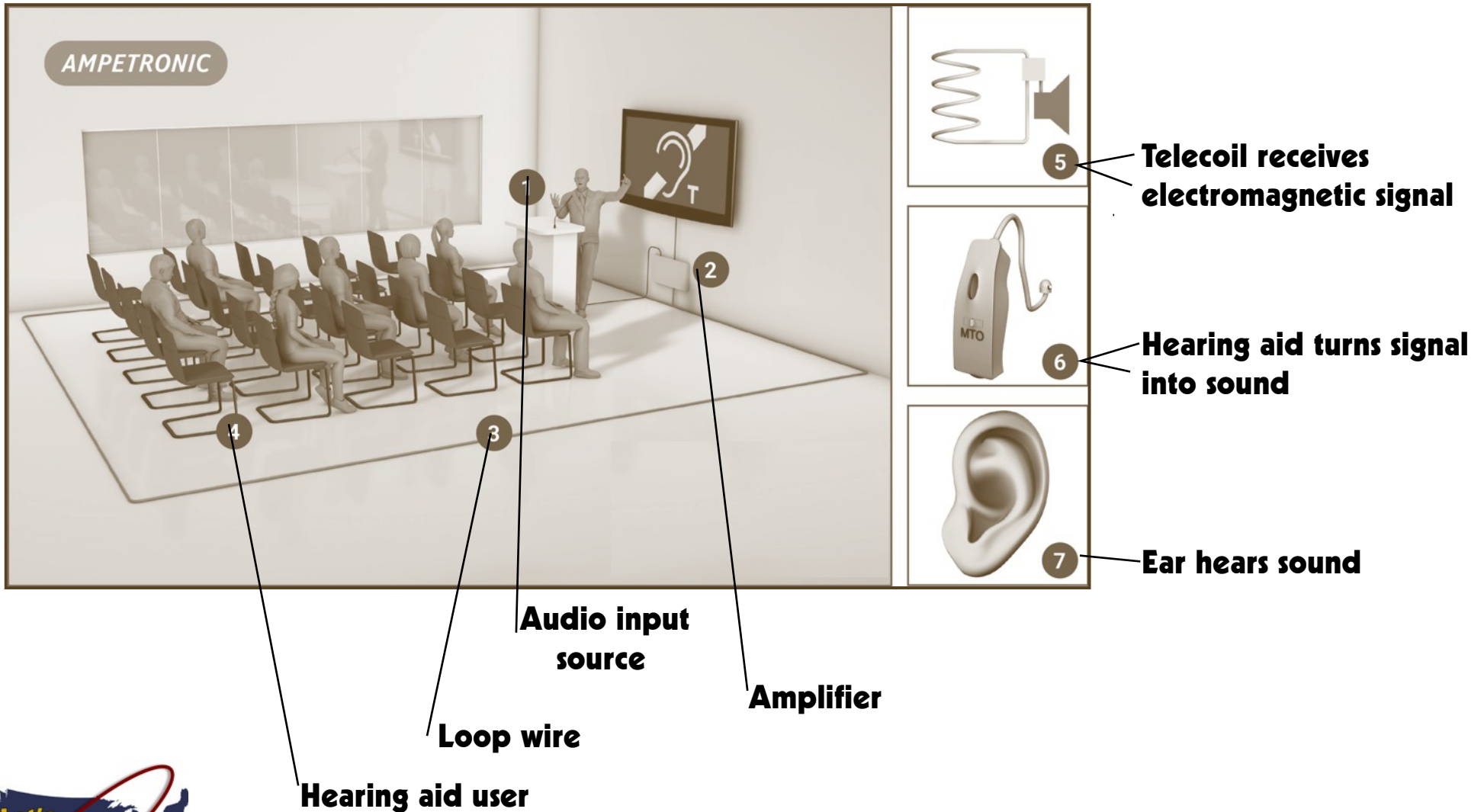


Why loops are preferred by the HoH

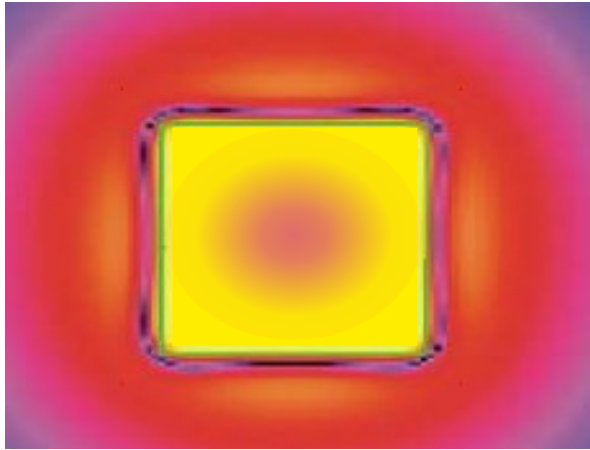
- No need to borrow and return equipment.
- No hygienic concerns over the previous use of the borrowed equipment.
- No need to remove and possibly damage or lose hearing aids.
- Sound is customized to match the user's audiogram
- No tell tale signs calling attention to the user and his/her hearing disability.



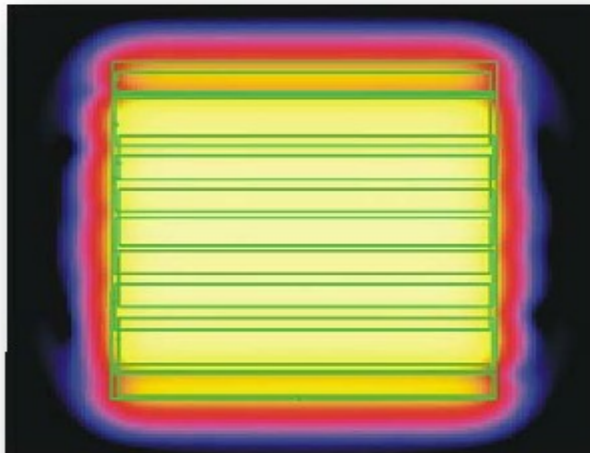
What is a hearing loop?



What is a hearing loop?

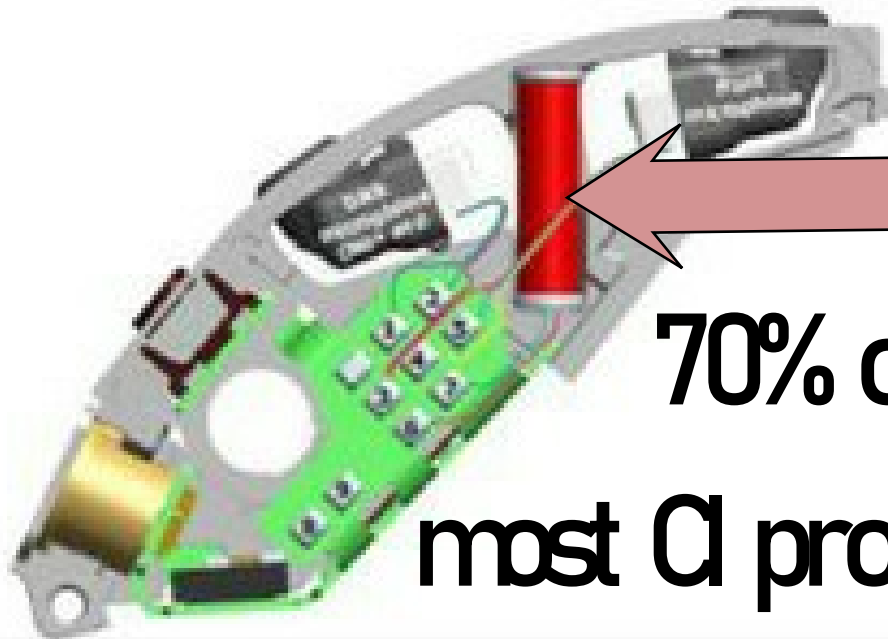


Perimeter loop has spillover and, without sufficient amplifier strength, a weak center.



Phased array contains signal and Has consistent signal strength.

What is a a telecoil?



T-coil

70% of all HA models

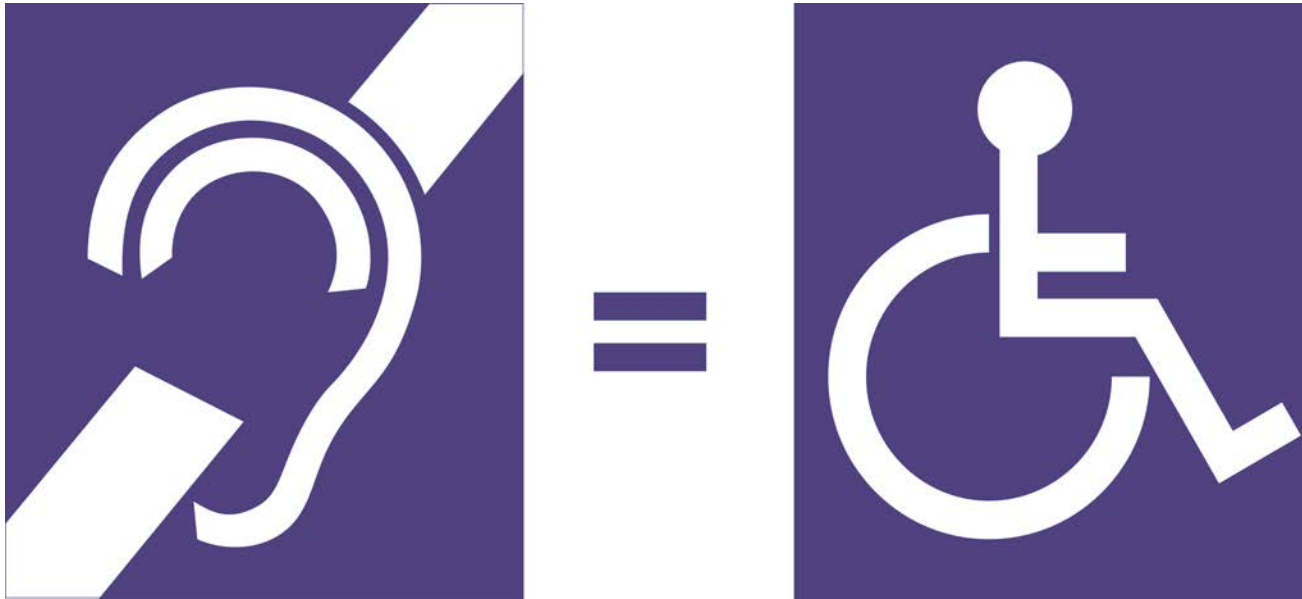
most CI processors

95% of HAs in England

Where are loops most often installed?

- Places of worship
- Theaters
- Legislative chambers
- Transportation terminals
- Lecture halls
- Conventions
- Public meeting rooms
- Home TV rooms





Hearing loops are the wheel chair ramps
of the hard of hearing.

Both serve the special needs of
people with a disability.





“Hearing loops are used more often by people with hearing loss than any other system”

Juliëtte Sterkens, Au.D. - National HLAA Get in the Hearing Loop Loop Advocate

Founder of the Let's Loop Wisconsin initiative that has resulted in looping of over 800 public venues and places of worship in Wisconsin.



**Please consider
Getting your venue
In the Loop**

